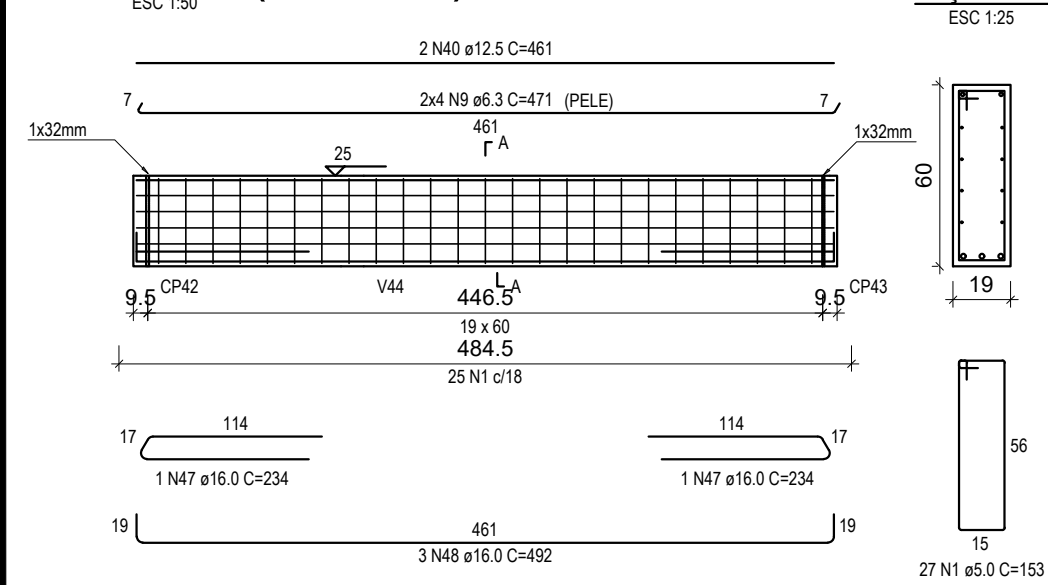
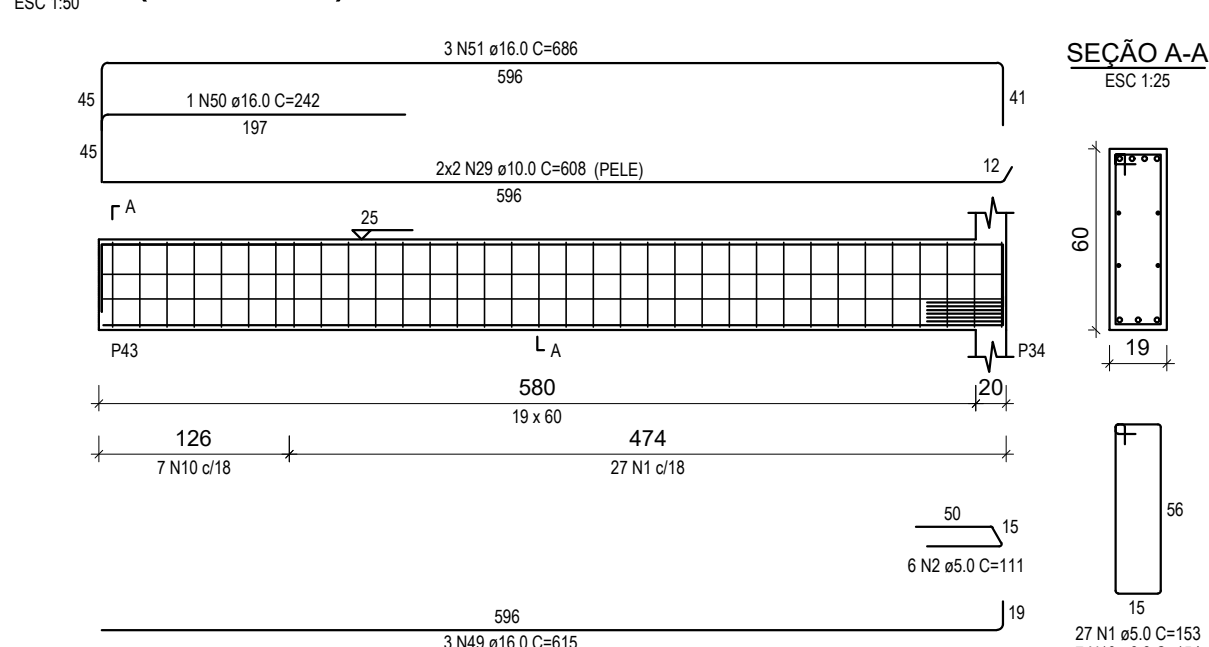


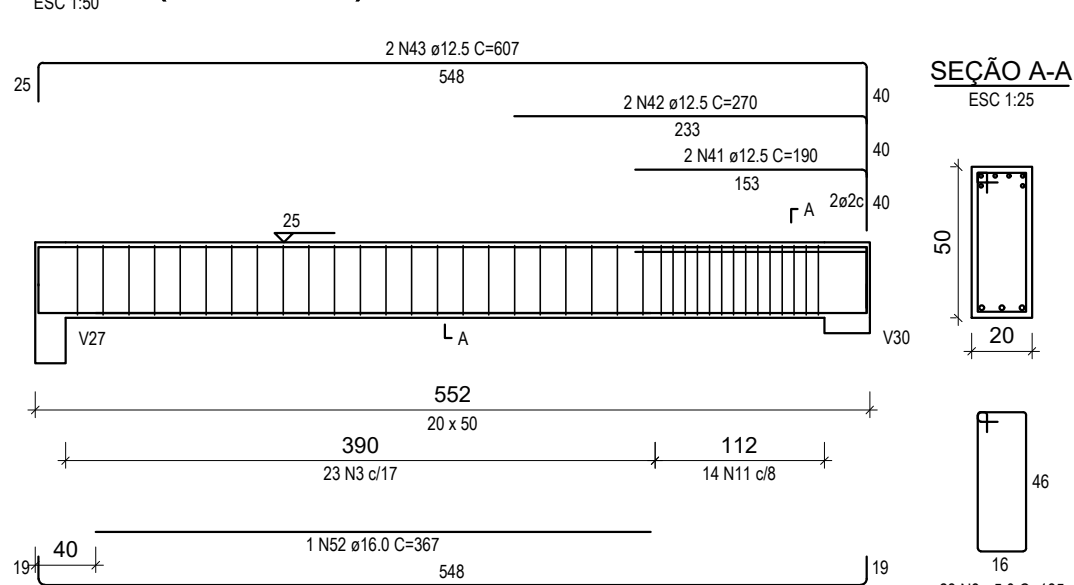
V15 (19 x 60)



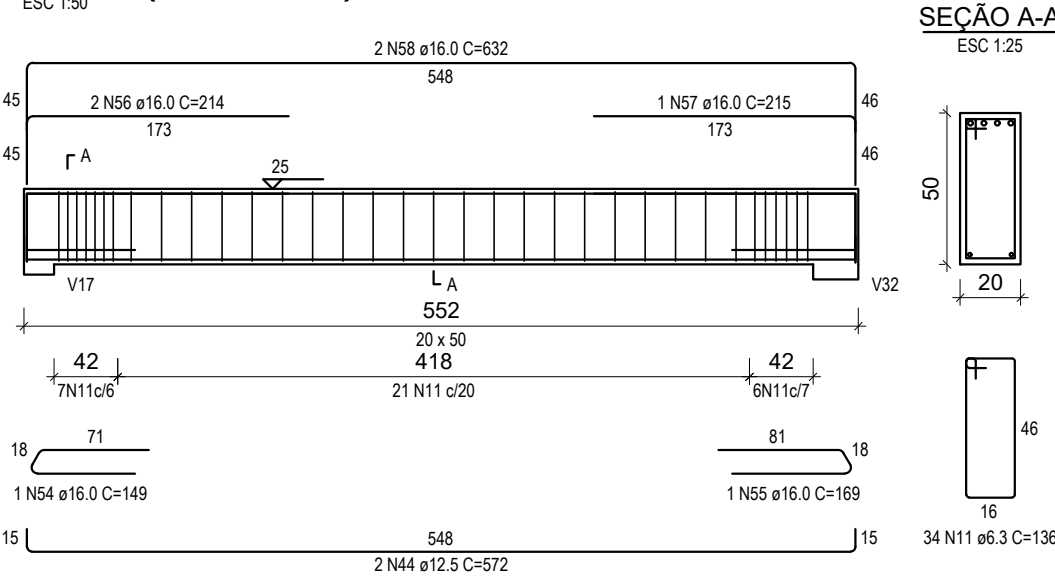
V16 (19 x 60)



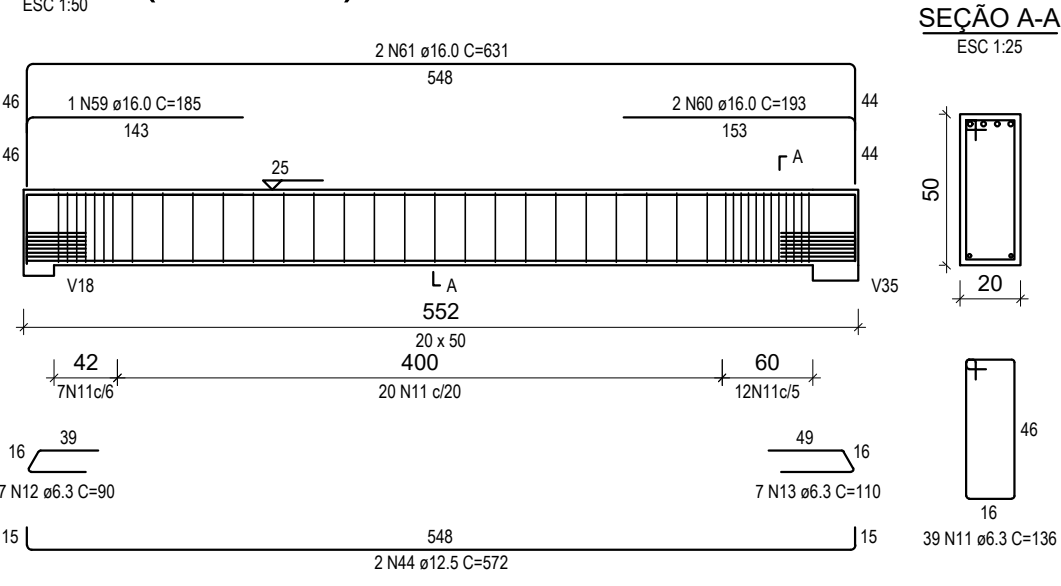
V17 (20 x 50)



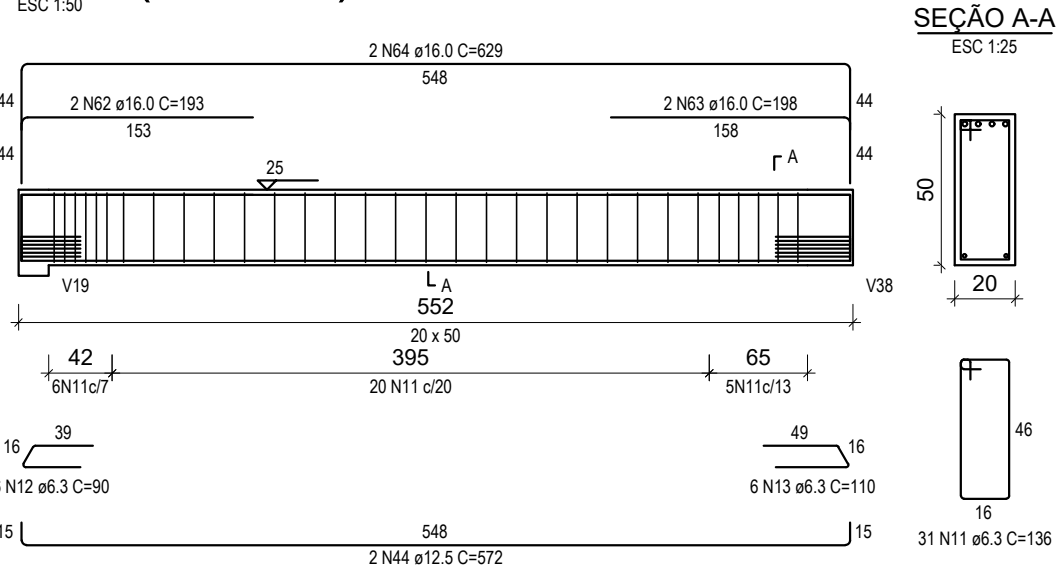
V18 (20 x 50)



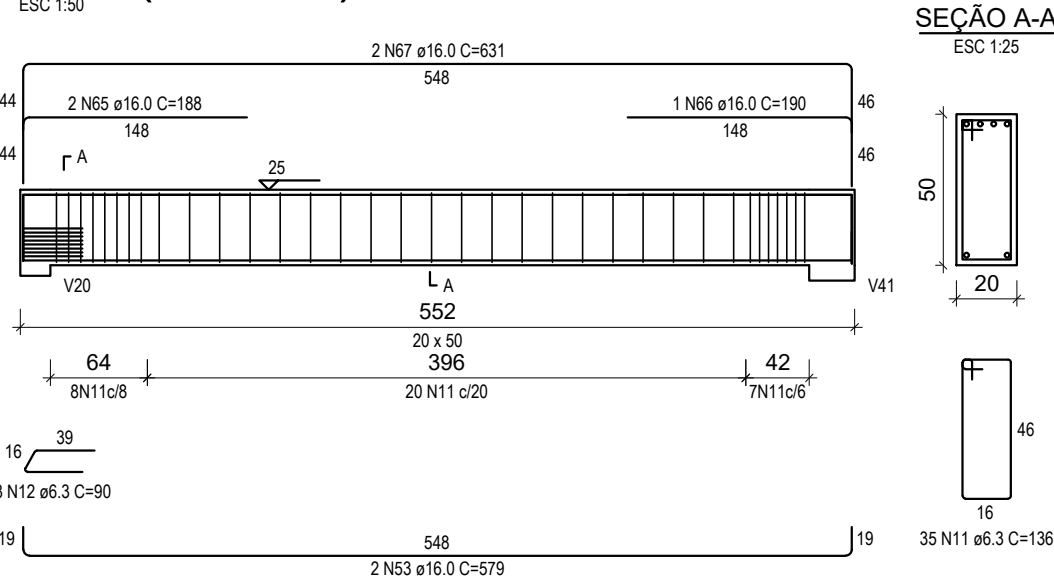
V19 (20 x 50)



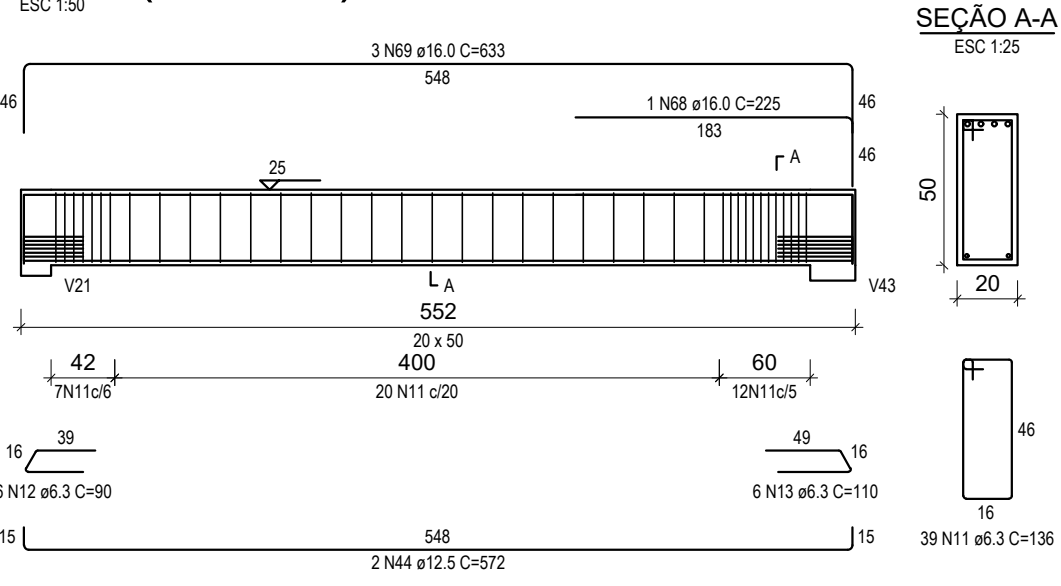
V20 (20 x 50)



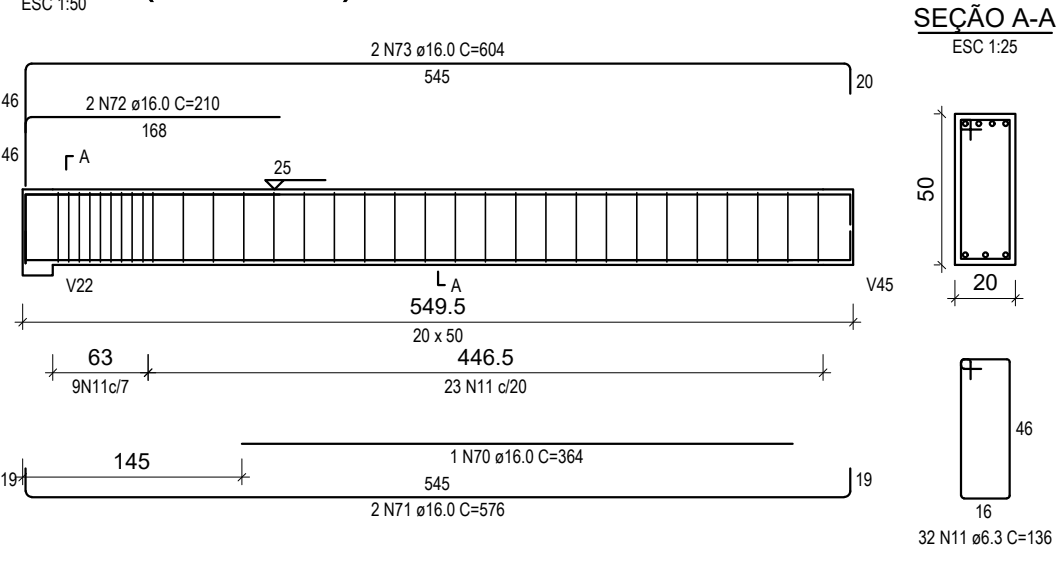
V21 (20 x 50)



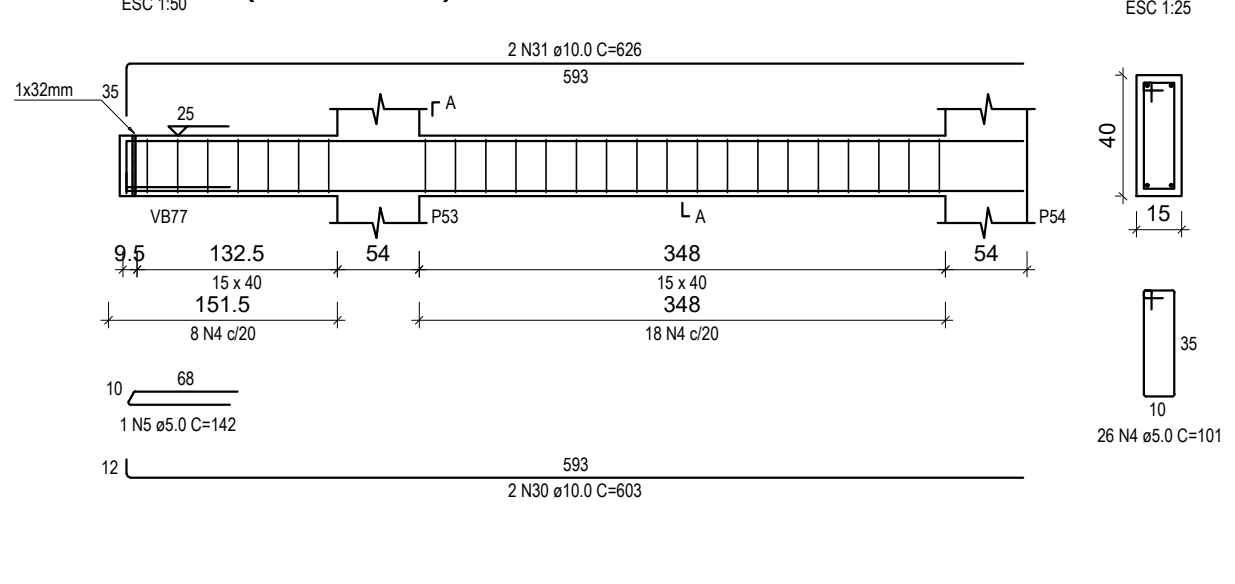
V22 (20 x 50)



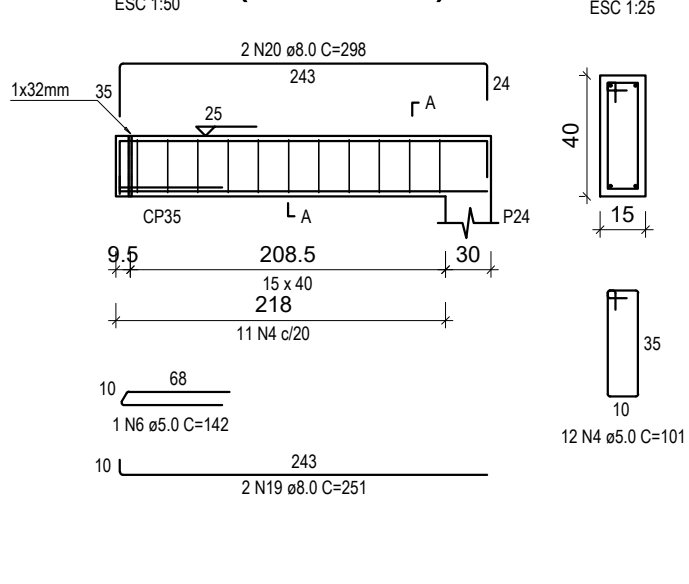
V23 (20 x 50)



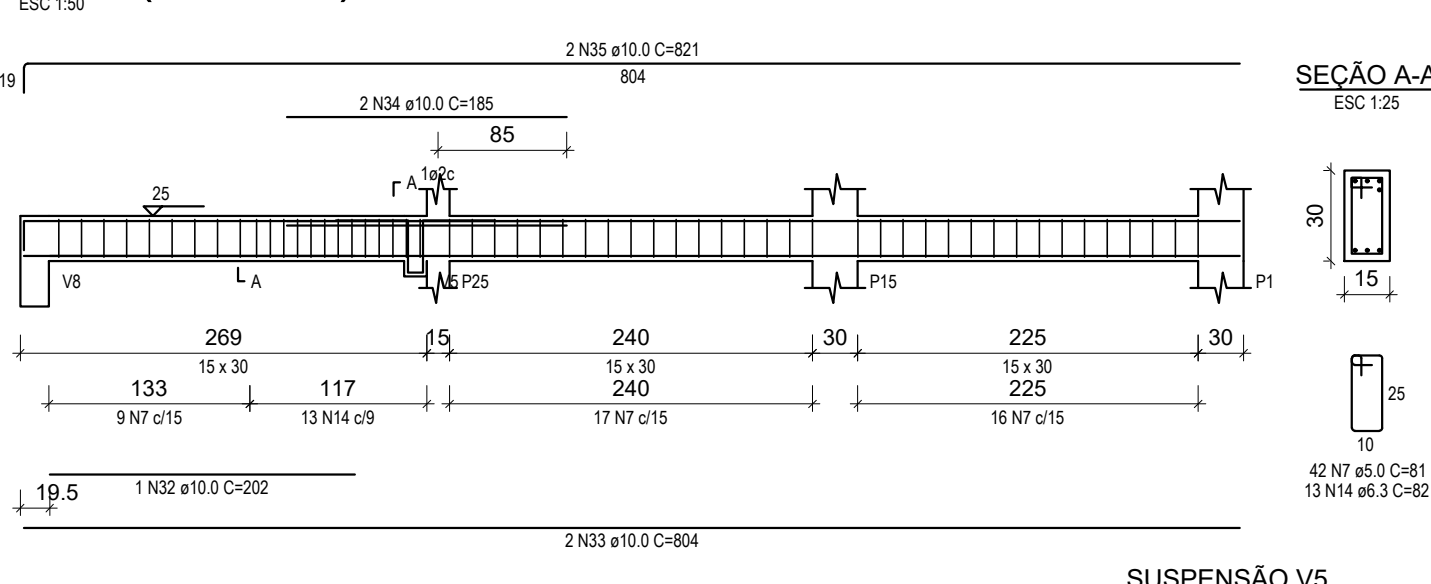
V24 (15 x 40)



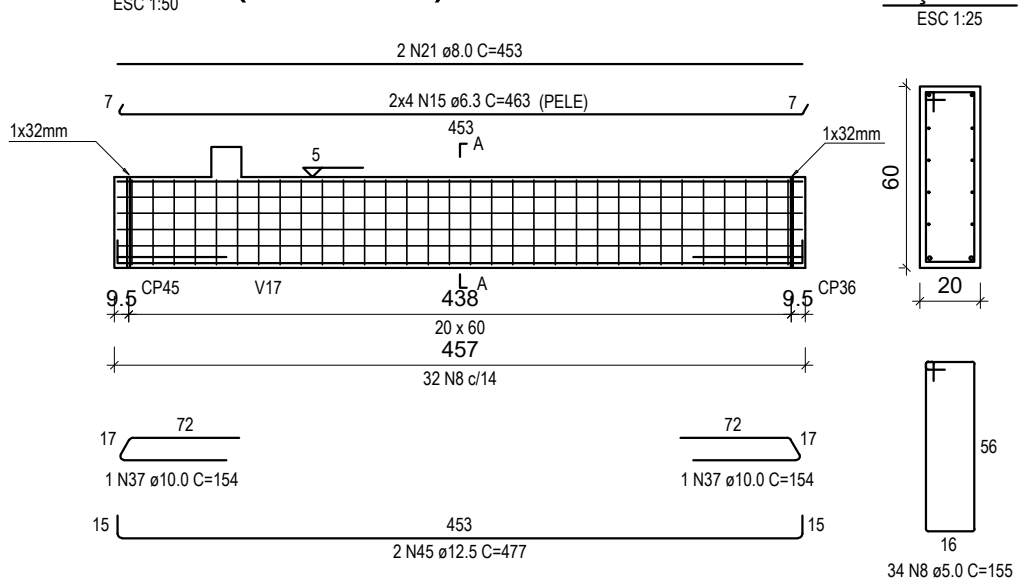
V25 (15 x 40)



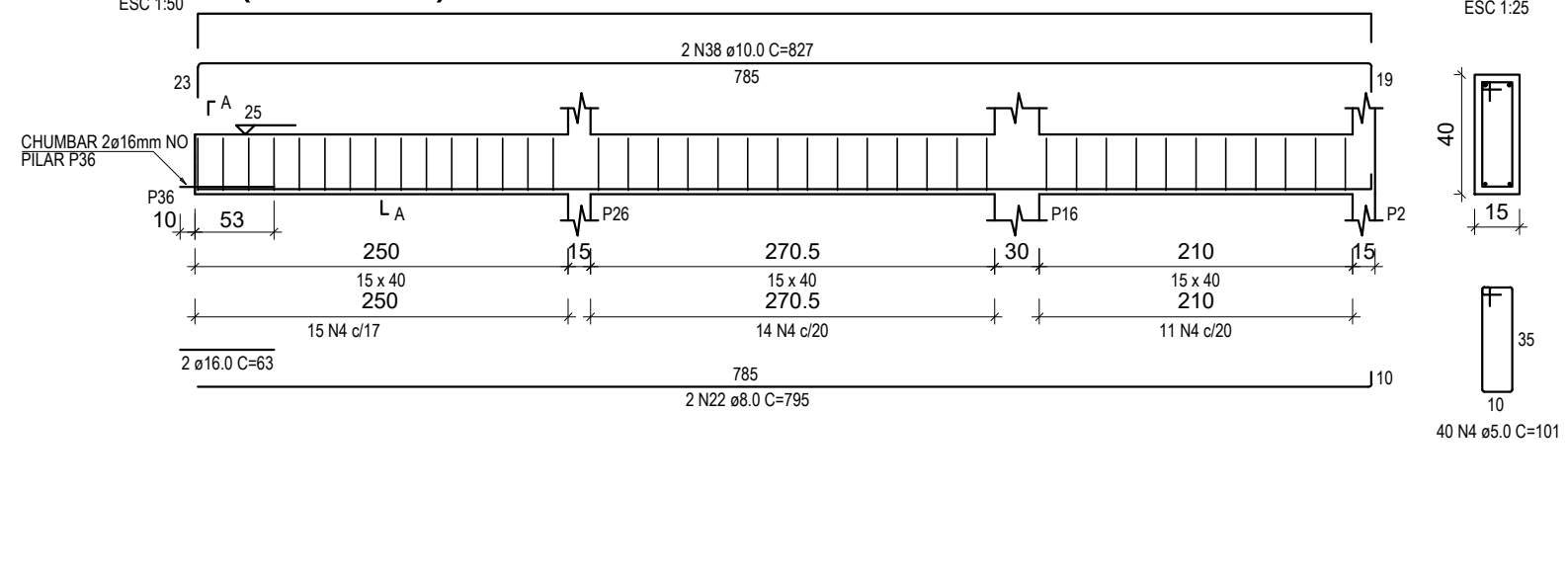
V26 (15 x 30)



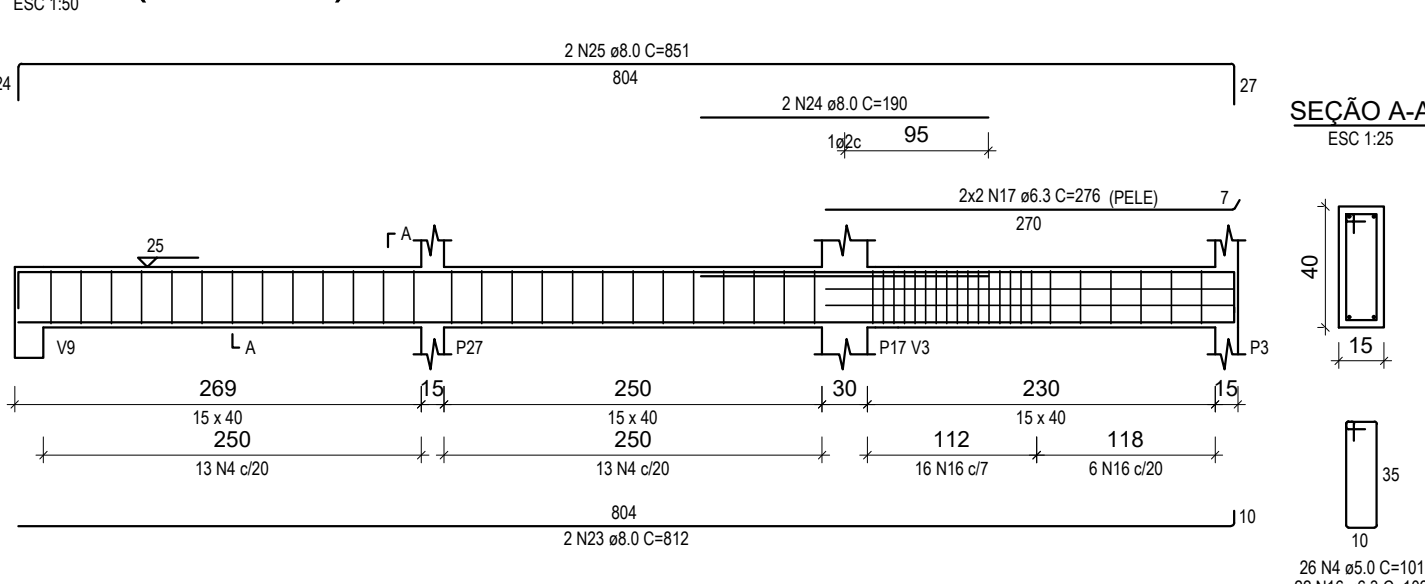
V27 (20 x 60)



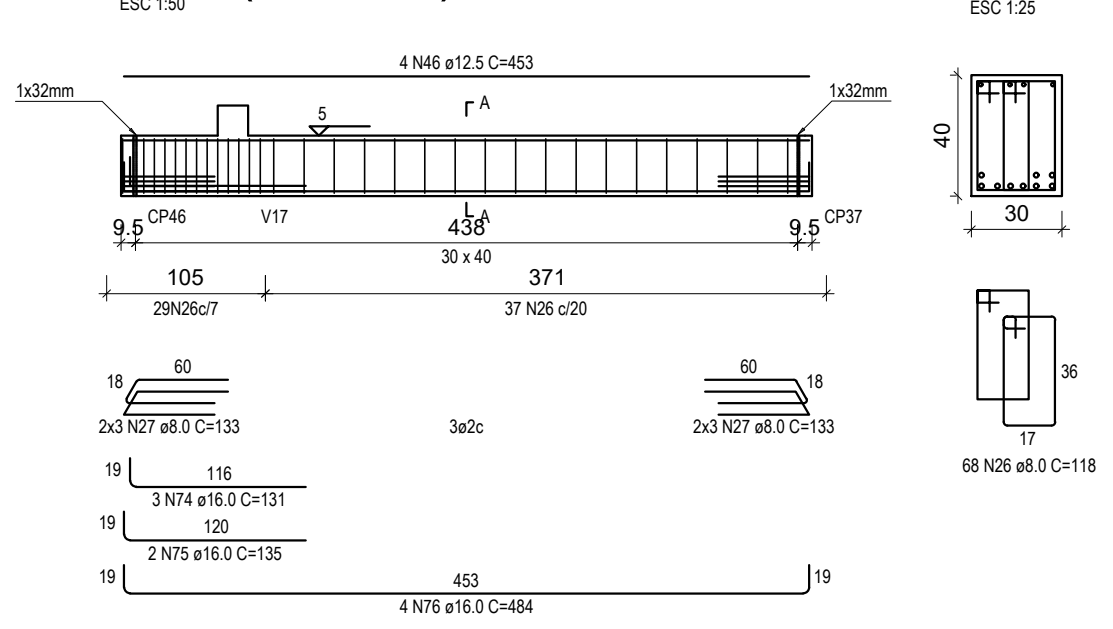
V28 (15 x 40)



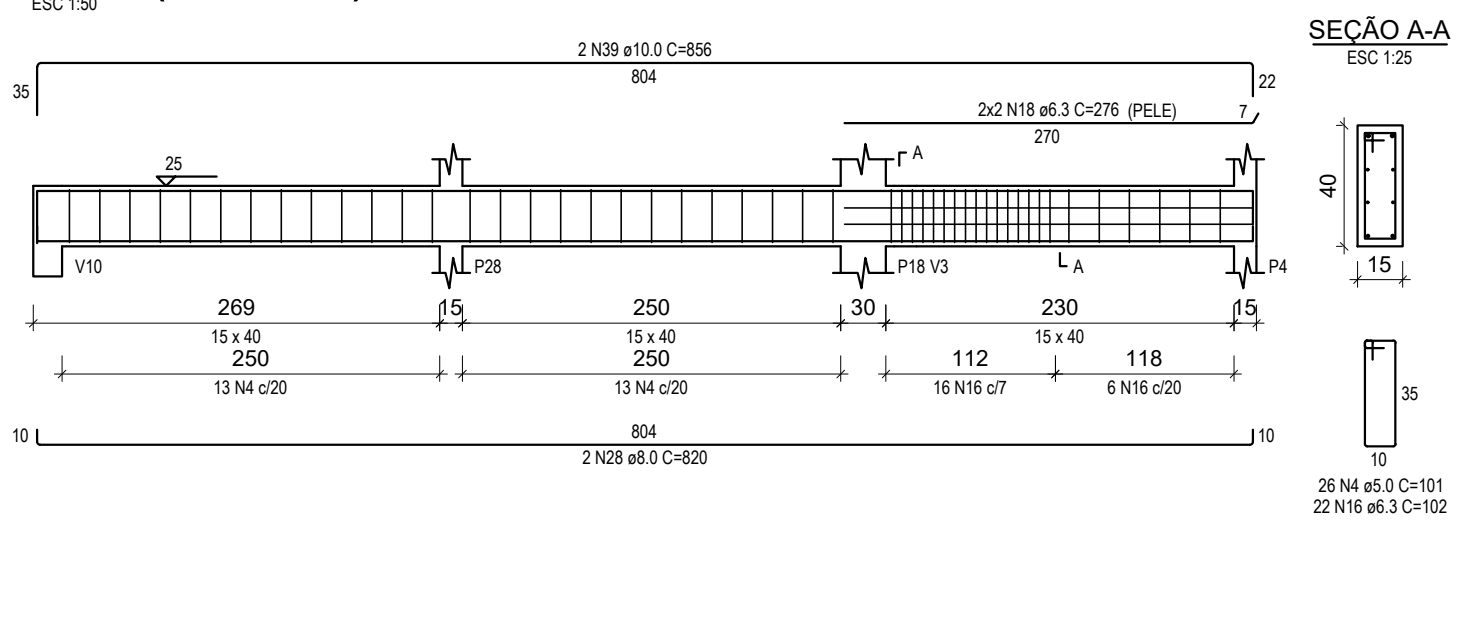
V29 (15 x 40)



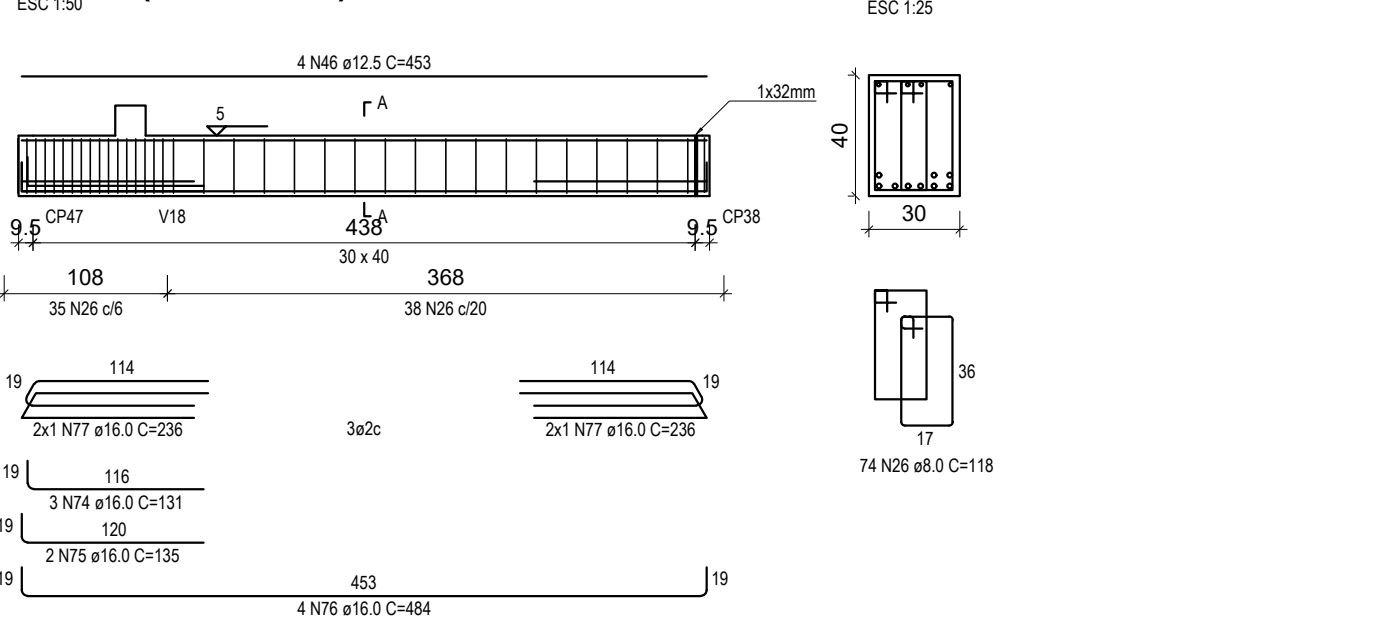
V30 (30 x 40)



V31 (15 x 40)



V32 (30 x 40)



RELAÇÃO DO AÇO

AÇO	N	DIAM (mm)	QUANT	C.UNIT (cm)	C.TOTAL (cm)
CA60	1	5.0	54	153	8262
	2	5.0	6	111	666
	3	5.0	23	135	3105
	4	5.0	130	101	13130
	5	5.0	1	142	142
	6	5.0	1	142	142
	7	5.0	42	81	3402
	8	5.0	34	155	5270
	9	6.3	8	471	3768
	10	6.3	7	154	1078
CA50	11	6.3	224	136	30464
	12	6.3	27	90	2430
	13	6.3	19	110	2090
	14	6.3	13	82	1066
	15	6.3	8	463	3704
	16	6.3	44	102	4488
	17	6.3	4	276	1104
	18	6.3	4	276	1104
	19	8.0	2	251	502
	20	8.0	2	298	596
	21	8.0	2	453	906
	22	8.0	2	795	1590
	23	8.0	2	812	1624
	24	8.0	2	190	380
	25	8.0	2	851	1702
	26	8.0	142	118	16756
	27	8.0	12	133	1596
	28	8.0	2	820	1640
	29	10.0	4	608	2432
	30	10.0	2	603	1206
	31	10.0	2	626	1252
	32	10.0	1	202	202
	33	10.0	2	804	1608
	34	10.0	2	185	370
	35	10.0	2	821	1642
	36	10.0	1	167	167
	37	10.0	2	154	308
	38	10.0	2	827	1654
	39	10.0	2	856	1712
	40	12.5	2	461	922
	41	12.5	2	190	380
	42	12.5	2	270	540
	43	12.5	2	607	1214
	44	12.5	6	572	4576
	45	12.5	2	477	954
	46	12.5	8	453	3624
	47	16.0	2	234	468
	48	16.0	3	492	1476
	49	16.0	3	615	1845
	50	16.0	1	242	242
	51	16.0	3	666	2058
	52	16.0	1	367	367
	53	16.0	4	579	2316
	54	16.0	1	149	149
	55	16.0	1	169	169
	56	16.0	2	214	428
	57	16.0	1	215	215
	58	16.0	2	632	1264
	59	16.0	1	185	185
	60	16.0	2	193	386
	61	16.0	2	631	1262
	62	16.0	2	193	386
	63	16.0	2	198	396
	64	16.0	2	629	1258
	65	16.0	2	188	376
	66	16.0	1	190	190
	67	16.0	2	651	1262
	68	16.0	1	225	225
	69	16.0	3	633	1899
	70	16.0	1	364	364
	71	16.0	2	576	1152
	72	16.0	2	210	420
	73	16.0	2	604	1208
	74	16.0	6	131	786
	75	16.0	4	135	540
	76	16.0	8	484	3872
	77	16.0	4	236	944

RESUMO DO AÇO

AÇO	DIAM (mm)	C.TOTAL (m)	PESO + 10% (kg)
CA50	6.3	513	138.1
	8.0	272.9	118.6
	10.0	125.6	85.2
	12.5	122.1	129.4
CA60	16.0	282.3	490
	5.0	341.2	57.8
PESO TOTAL (kg)			
CA50	961.3		
CA60	57.8		

Volume de concreto (C-30) = 9.03 m³
Área de forma = 114.48 m²

PROJETO ESTRUTURAL

Halla | arquitetura
Avenida Sete de Setembro, 50, Comercial C. Berri
Sala 09 | Centro | Timbó | Santa Catarina
www.hallarq.com

CONSTRUÇÃO INSTITUCIONAL EM ALVENARIA - GINÁSIO ESCOLAR
Rodovia Estadual - SC, 416 - São Roque
Timbó - SC

Autor do Projeto: Anderson Halla
Arquiteto e Urbanista - CAU nº 176063-7

Assinatura:

Proprietário: Fundo Municipal de Educação - FMDE de Timbó
CNPJ: 32.257.384/0001-19

Assinatura:

Escala: Indica da
Revisão: 00
Data: Maio 2020

Prancha:

VIGAS IN LOCO FUNDAÇÃO V15-V32

E 44